



PRESSURIZED STEEL BOILER WITH REVERSED FLAME

OUTPUT RANGE

from 340 to 7000 kW

WORKING TEMPERATURE

minimum return temperature 55°C

OPERATION WITH

gas or oil fired pressure jet burners

MODELS

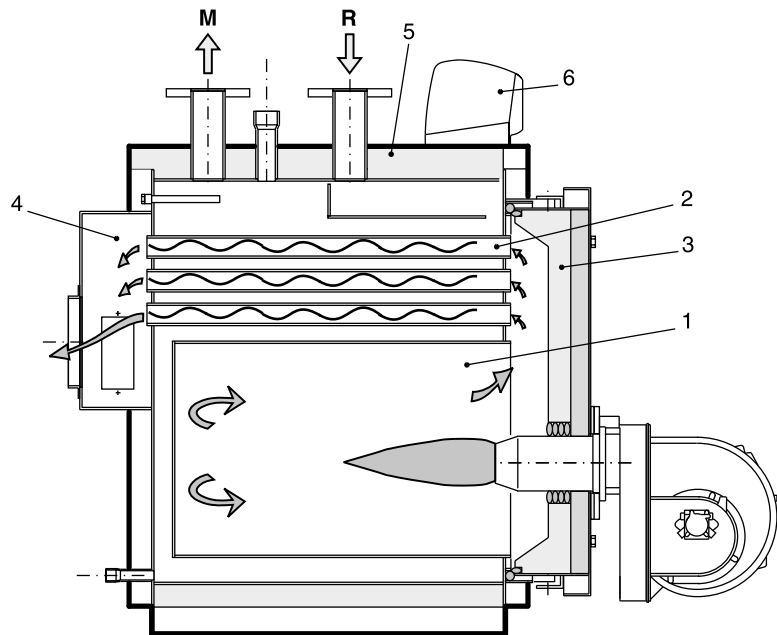
340	420	510	630	760	870	970	1100	1320	1570	1850
2200	2650	3000	3500	4000	4500	5000	5500	6000	6500	7000

CERTIFICATION IN OUTPUT RANGE

(in the order, it's possible to request a specific output within the certified range)

MAIN COMPONENTS

1. Furnace
2. Smoke pipes with smoke diverters
3. Door with flame control warning light
4. Smoke chamber
5. Body insulation
6. Panel board



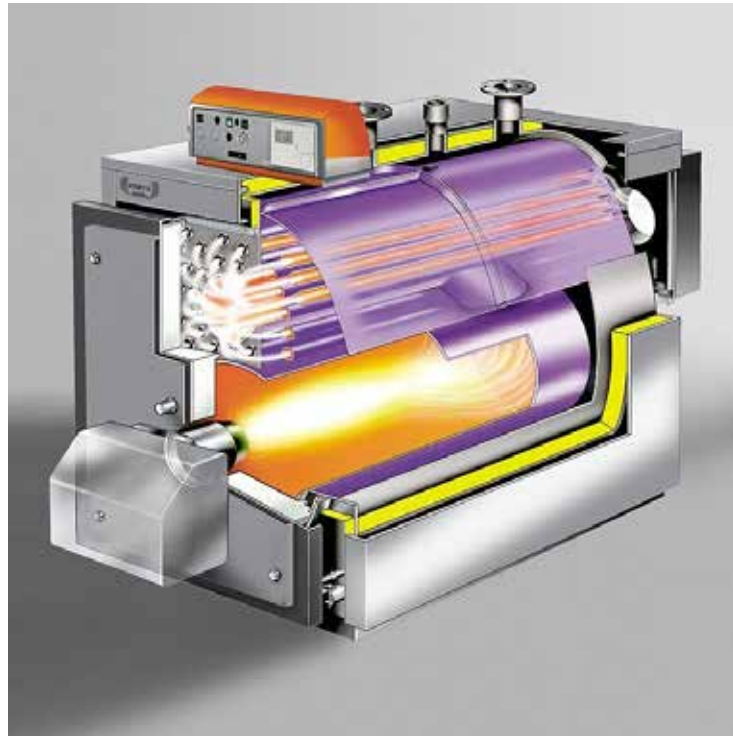
TECHNICAL DATA

Model	Heat output	Heat input	Boiler	Water side	Flue gas	Max. boiler	Combustion	Weight
	min/max	min/max	capacity	pressure	pressure	operating	chamber	
	kW	kW	l	m w.c.	mm w.c.	bar	m ³	kg
AMEX 340	255÷340	277÷371	298	0.16÷0.28	17÷34	6	0.226	629
AMEX 420	315÷420	342÷459	398	0.09÷0.17	16÷29	6	0.288	849
AMEX 510	385÷510	418÷557	462	0.14÷0.25	24÷43	6	0.337	972
AMEX 630	480÷630	520÷688	565	0.21÷0.38	32÷55	6	0.416	1102
AMEX 760	580÷760	630÷830	671	0.15÷0.26	29÷51	6	0.513	1372
AMEX 870	660÷870	715÷950	753	0.19÷0.33	33÷57	6	0.584	1482
AMEX 970	750÷970	815÷1060	836	0.24÷0.41	29÷49	6	0.656	1588
AMEX 1100	860÷1100	935÷1200	1040	0.18÷0.30	32÷52	6	0.748	1821
AMEX 1320	1000÷1320	1087÷1442	1242	0.20÷0.35	38÷67	6	0.869	2030
AMEX 1570	1200÷1570	1304÷1715	1418	0.19÷0.33	35÷60	6	1.087	2780
AMEX 1850	1400÷1850	1520÷2020	1617	0.26÷0.45	42÷73	6	1.303	3280
AMEX 2200	1700÷2200	1845÷2400	2086	0.21÷0.34	39÷65	6	1.650	4145
AMEX 2650	2000÷2650	2170÷2890	2324	0.28÷0.48	43÷76	6	1.866	4465
AMEX 3000	2300÷3000	2492÷3280	2667	0.36÷0.62	35÷60	6	2.313	5110
AMEX 3500	2700÷3500	2930÷3825	4142	0.54÷0.84	47÷74	6	2.601	6700
AMEX 4000	3200÷4000	3478÷4371	4455	0.54÷0.85	60÷80	6	3.126	7500
AMEX 4500	3420÷4500	3638.3÷4838.7	6012	0.70÷0.85	51÷88	6	4.151	7750
AMEX 5000	3800÷5000	4064.2÷5421.8	6012	0.80÷1.05	65÷110	6	4.151	7750
AMEX 5500	4180÷5500	4446.8÷5914	7058	0.95÷1.15	60÷100	6	4.838	9300
AMEX 6000	4870÷6000	4877÷6506.2	7058	1.00÷1.35	68÷120	6	4.838	9300
AMEX 6500	4940÷6500	5255.3÷6989.2	7909	1.05÷1.50	61÷105	6	6.832	12600
AMEX 7000	5320÷7000	5689.8÷7590.5	7909	1.10÷1.75	69÷120	6	6.832	12600

Pressure drops corresponding to a thermal variation of 15K.

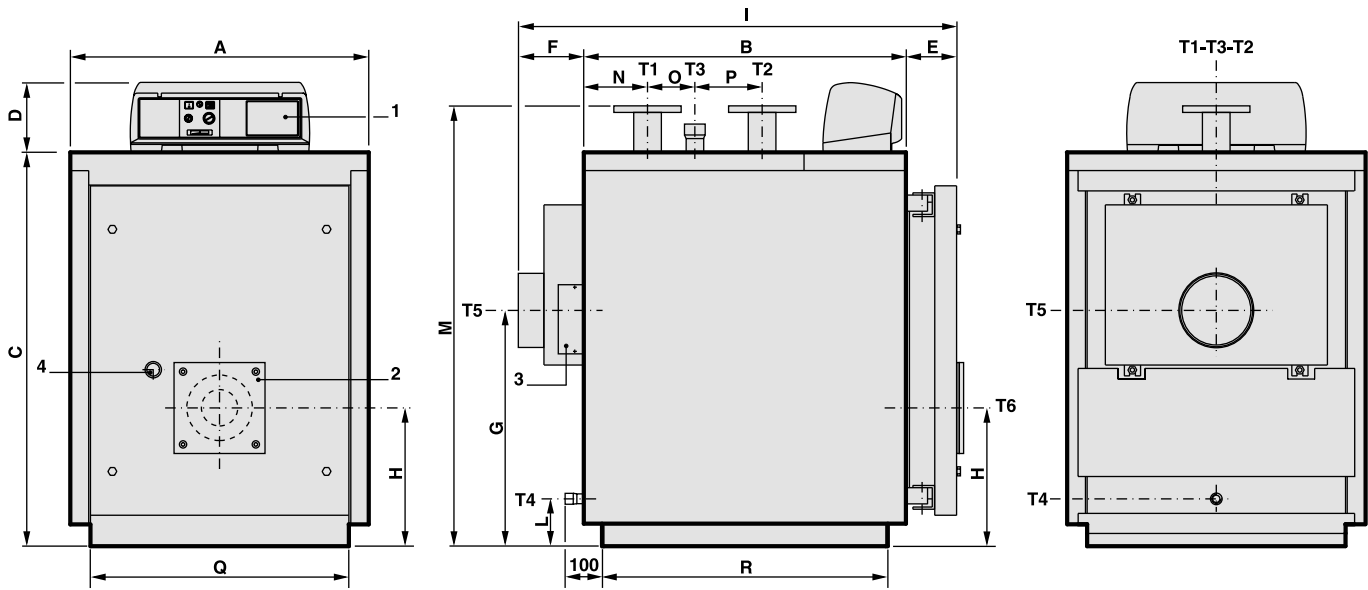
On special order the boilers from model AMEX 1100 to AMEX 7000 can be manufactured for a max. working pressure up to 10 bar.

PRODUCT PLUS VALUES



- **FLEXIBILITY OF USE**
- **THERMAL EXCHANGE OPTIMISATION**
by driven water passage into the boiler
- **THE ELLIPTIC SHELL SHAPE (up to 970 kW)**
has interesting advantages:
 - smaller dimensions (for easier transport and positioning)
 - smoke pipes positioning above the furnace with drastic reduction of the possible condensation
- **SMOKE PIPES OF HIGH THICKNESS**
with anti-condensing effect
- **TURBOLATORS**
for the thermal exchange optimisation into the smoke pipes
- **CYLINDRICAL FLOATING FURNACE**
anti thermo-mechanic stress from 760 kW
- **BOTTOM OF THE FURNACE WITH DISSIPATION PLATES**
for greater performance and greater mechanical resistance
- **FRONT DOOR**
with self centering locking
- **INTERNAL DOOR INSULATION**
in light refractory concrete
- **EXTERNAL CASING**
inclusive of 80 mm rock wool insulation
- **THERMOSTATIC OR ELECTRONIC CONTROL PANELS**
- **FACILITATED TRANSPORT**
thanks to the upper hooks and strong base plates

DIMENSIONS AMEX 340÷970



- 1 Panel board
- 2 Burner connection flange
- 3 Smoke chamber cleaning door
- 4 Flame control warning light
- T1 Heating flow
- T2 Heating return
- T3 Expansion vessel connection
- T4 Boiler drain
- T5 Chimney connection
- T6 Burner connection

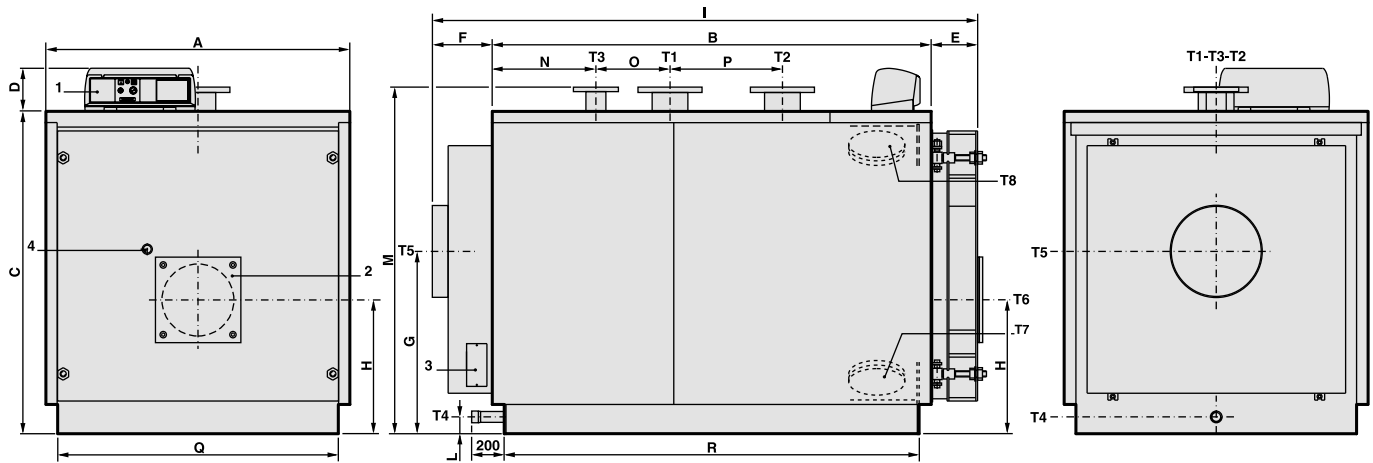
AMEX	Nominal output kW	Nominal input kW	Boiler capacity l	Water pressure drops(**) m w.c.	Flue gas pressure drop mm w.c.	Maximum boiler working pressure bar	Weight kg	CONNECTIONS				
								T1 T2	T3 ISO 7/1	T4 ISO 7/1	T5 Øi	T6 Ø
								UNI 2278 PN16	UNI 2278 PN16	ISO 7/1	mm	mm
340	255÷340	277÷371	298	0.16÷0.28	17÷34	6	629	DN 80	Rp 2	Rp ¾	250	220
420	315÷420	342÷459	398	0.09÷0.17	16÷29	6	796	DN 100	Rp 2	Rp ¾	250	220
510	385÷510	418÷557	462	0.14÷0.25	24÷43	6	919	DN 100	Rp 2	Rp ¾	250	220
630	480÷630	520÷688	565	0.21÷0.38	32÷55	6	1049	DN 100	Rp 2	Rp ¾	300	220
760	580÷760	630÷830	671	0.15÷0.26	29÷51	6	1341	DN 125	DN 65	Rp 1¼	350	270
870	660÷870	715÷950	753	0.19÷0.33	33÷57	6	1447	DN 125	DN 65	Rp 1¼	350	270
970	750÷970	815÷1060	836	0.24÷0.41	29÷49	6	1553	DN 125	DN 65	Rp 1¼	350	270

AMEX	A	B	C	D	E	F	G	H	I	L	M*	N	O	P	Q*	R*
	mm	mm	mm	mm	mm	mm	mm	mm	mm	mm	mm	mm	mm	mm	mm	mm
340	860	1210	1182	190	139	190	708	400	1541	130	1310	215	340	250	750	1112
420	890	1275	1352	190	139	190	748	440	1606	125	1485	255	285	315	780	1177
510	890	1470	1352	190	139	190	748	440	1801	125	1485	255	480	315	780	1372
630	890	1780	1352	190	139	190	748	440	2113	125	1485	255	790	315	780	1682
760	1122	1605	1432	190	195	190	765	480	1989	125	1540	298	435	440	1020	1504
870	1122	1800	1432	190	195	190	765	480	2184	125	1540	298	630	440	1020	1699
970	1122	1995	1432	190	195	190	765	480	2379	125	1540	298	825	440	1020	1894

(*) Minimum dimensions for boiler room access.

(**) Pressure drops corresponding to a thermal variation of 15K.

DIMENSIONS AMEX 1100÷2650



- | | | |
|--------------------------------------|---------------------------------------|------------------------------|
| 1 Panel board | T1 Heating flow | T5 Chimney connection |
| 2 Burner connection flange | T2 Heating return | T6 Burner connection |
| 3 Smoke chamber cleaning door | T3 Expansion vessel connection | T7 Boiler air bleed |
| 4 Flame control warning light | T4 Boiler drain | T8 Inspection door |

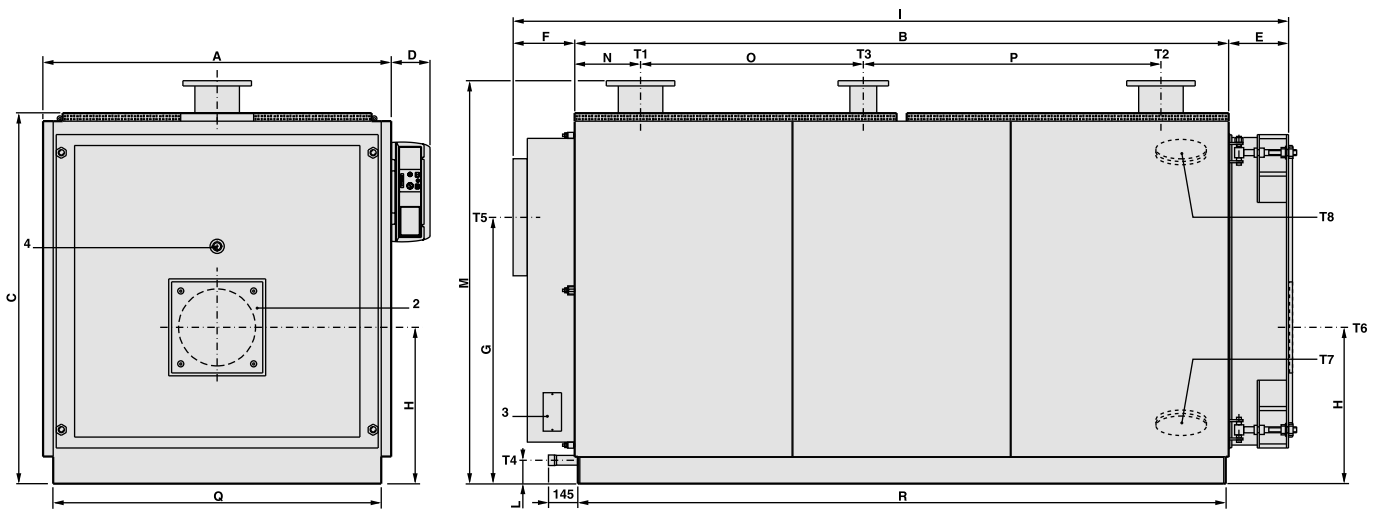
AMEX	Nominal output kW	Nominal input kW	Boiler capacity l	Water pressure drops(**) m w.c.	Flue gas pressure drop mm w.c.	Maximum boiler working pressure bar	Weight kg	CONNECTIONS				
								T1 T2	T3	T4	T5 Øi	T6 Ø
								UNI2278PN16	UNI2278PN16	ISO 7/1	mm	mm
1100	860÷1100	935÷1200	1040	0.18÷0.30	32÷52	6	1821	DN 150	DN 80	Rp 1½	400	320
1320	1000÷1320	1087÷1442	1242	0.20÷0.35	38÷67	6	2030	DN 150	DN 80	Rp 1½	400	320
1570	1200÷1570	1304÷1715	1418	0.19÷0.33	35÷60	6	2780	DN 175	DN 100	Rp 1½	450	320
1850	1400÷1850	1520÷2020	1617	0.26÷0.45	42÷73	6	3280	DN 175	DN 100	Rp 1½	450	320
2200	1700÷2200	1845÷2400	2086	0.21÷0.34	39÷65	6	4145	DN 200	DN 125	Rp 1½	520	380
2650	2000÷2650	2170÷2890	2324	0.28÷0.48	43÷76	6	4465	DN 200	DN 125	Rp 1½	520	380

AMEX	A	B	C	D	E	F	G	H	I	L	M*	N	O	P	Q*	R*
	mm	mm	mm	mm	mm	mm	mm	mm	mm	mm	mm	mm	mm	mm	mm	mm
1100	1352	1952	1432	190	207	187	810	595	2346	180	1540	461	330	500	1250	1846
1320	1352	2292	1432	190	207	187	810	595	2686	180	1540	461	670	500	1250	2186
1570	1462	2282	1542	190	227	272	880	640	2781	75	1650	561	510	550	1360	2176
1850	1462	2652	1542	190	227	272	880	640	3151	75	1650	561	880	550	1360	2546
2200	1622	2692	1702	190	259	274	950	690	3225	75	1810	661	670	700	1520	2590
2650	1622	3014	1702	190	258	273	950	690	3545	75	1810	662	990	700	1520	2910

(*) Minimum dimensions for boiler room access. (**) Pressure drops corresponding to a thermal variation of 15K.

On special order the boilers from model 1100 to 7000 can be manufactured for a max. working pressure up to 10 bar.

DIMENSIONS AMEX 3000÷4000



- 1 Panel board
- 2 Burner fixing plate
- 3 Smoke chamber cleaning door
- 4 Sight glass

- T1 C.H. flow
- T2 C.H. return
- T3 Expansion vessel connection
- T4 Boiler drain

- T5 Flue socket
- T6 Burner connection
- T7 Sludge drain
- T8 Inspection door

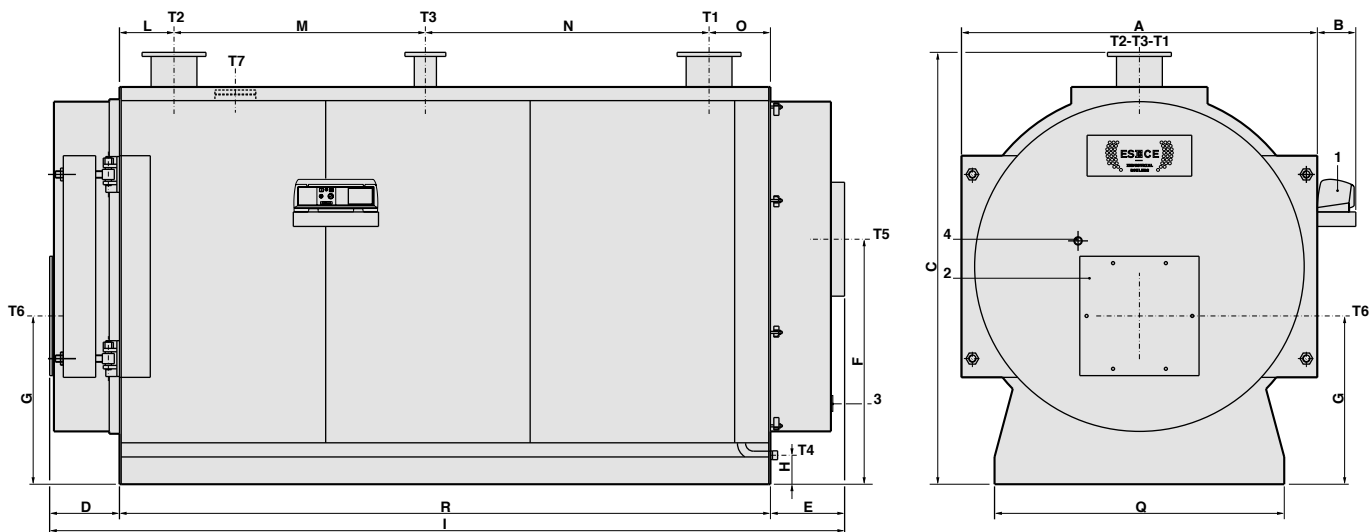
AMEX	Nominal output kW	Nominal input kW	Boiler capacity l	Water pressure drops(**) m w.c.	Flue gas pressure drop mm w.c.	Maximum boiler working pressure bar	Weight kg	CONNECTIONS				
								T1 T2	T3	T4	T5 Øi	T6 Ø
								UNI2278PN16	UNI2278PN16	ISO 7/1	mm	mm
3000	2300÷3000	2492÷3280	2667	0.36÷0.62	35÷60	6	5110	DN 200	DN 125	Rp 1½	570	380
3500	2700÷3500	2930÷3825	4142	0.54÷0.84	47÷74	6	6700	DN 200	DN 125	Rp 1½	620	400
4000	3040÷4000	3297÷4371	4455	0.54÷0.85	60÷80	6	7500	DN 250	DN 125	Rp 1½	620	400

AMEX	A	B	C	D	E	F	G	H	I	L	M*	N	O	P	Q*	R*
	mm	mm	mm	mm	mm	mm	mm	mm	mm	mm	mm	mm	mm	mm	mm	mm
3000	1720	3230	1830	190	295	310	1315	772	3835	115	1990	325	1100	1470	1620	3200
3500	1970	3194	2090	190	325	360	1535	915	3879	144	2271	377	1060	1420	1870	3164
4000	1970	3594	2090	190	325	360	1535	915	4279	144	2271	777	1060	1420	1870	3564

(*) Minimum dimensions for boiler room access. (**) Pressure drops corresponding to a thermal variation of 15K.

On special order the boilers from model AMEX 1100 to AMEX 7000 can be manufactured for a max. working pressure up to 10 bar.

DIMENSIONS AMEX 4500÷7000



- 1 Panel board
- 2 Burner connection flange
- 3 Smoke chamber cleaning door
- 4 Flame control warning light
- T1 Heating flow
- T2 Heating return
- T3 Expansion vessel connection
- T4 Boiler drain
- T5 Chimney connection
- T6 Burner connection
- T7 Inspection door

AMEX	Nominal output kW	Nominal input kW	Boiler capacity l	Water pressure drops(**) m w.c.	Flue gas pressure drop mm w.c.	Maximum boiler working pressure bar	Weight kg	CONNECTIONS					
								T1 T2	T3	T4	T5 Øi	T6 Ø	T7 Ø
								UNI2278PN16	UNI2278PN16	ISO 7/1	mm	mm	mm
4500	3420÷4500	3638.3÷4838.7	6012	0.70÷0.85	51÷88	6	8310	DN 250	DN 125	Rp 1½	660	500	133
5000	3800÷5000	4064.2÷5421.8	6012	0.80÷1.05	65÷110	6	8310	DN 250	DN 125	Rp 1½	660	500	133
5500	4180÷5500	4446.8÷5914	7058	0.95÷1.15	60÷100	6	9300	DN 250	DN 125	Rp 1½	660	500	133
6000	4560÷6000	4877÷6506.2	7058	1.00÷1.35	68÷120	6	9300	DN 250	DN 125	Rp 1½	660	500	133
6500	4940÷6500	5255.3÷6989.2	7909	1.05÷1.50	61÷105	6	12600	DN 250	DN 125	Rp 1½	720	500	133
7000	5320÷7000	5689.8÷7590.5	7909	1.10÷1.75	69÷120	6	12600	DN 250	DN 125	Rp 1½	720	500	133

AMEX	A	B	C*	D	E	F	G	H	I	L	M	N	O	Q*	R*
	mm	mm	mm	mm	mm	mm	mm	mm	mm	mm	mm	mm	mm	mm	mm
4500	2088	226	2533	417	445	1437	987	170	4682	320	1475	1665	360	1700	3820
5000	2088	226	2533	417	445	1437	987	170	4682	320	1475	1665	360	1700	3820
5500	2214	240	2653	437	465	1550	1007	167	4872	320	1475	1815	360	1700	3970
6000	2214	240	2653	437	465	1550	1007	167	4872	320	1475	1815	360	1700	3970
6500	2380	240	2860	509	595	1650	1100	224	5484	325	2920	670	465	1850	4380
7000	2380	240	2860	509	595	1650	1100	224	5484	325	2920	670	465	1850	4380

(*) Minimum dimensions for boiler room access. (**) Pressure drops corresponding to a thermal variation of 15K.
On special order the boilers from model AMEX 1100 to AMEX 7000 can be manufactured for a max. working pressure up to 10 bar.

BURNER BLAST TUBE DIMENSIONS

BOILER TYPE	øA mm	L mm	BOILER TYPE	øA mm	L mm
AMEX 340÷630	220	250	AMEX 3000	380	400
AMEX 760÷970	270	270	AMEX 3500÷4000	400	400
AMEX 1100÷1320	320	300	AMEX 4500÷6000	500	520
AMEX 1570÷1850	320	320	AMEX 6500÷7000	500	630
AMEX 2200÷2650	380	350			

